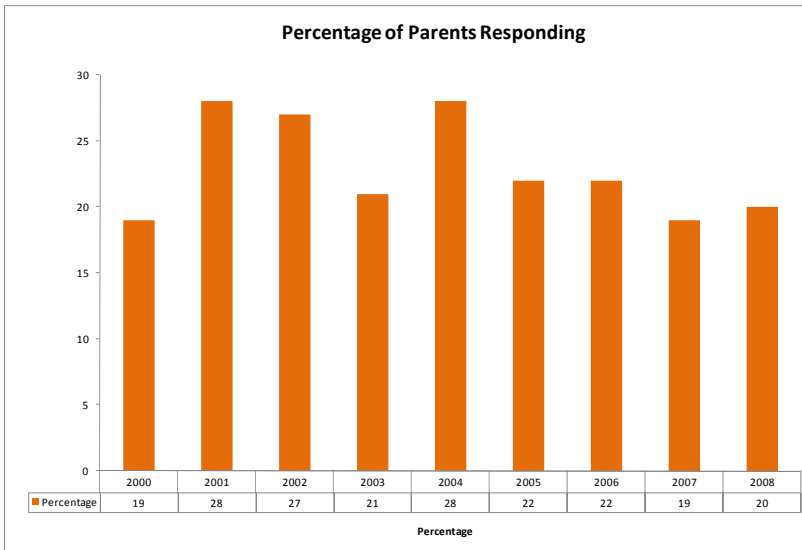




December 9, 2008  
 9<sup>th</sup> Annual Parent/Staff Satisfaction Survey  
 Executive Summary

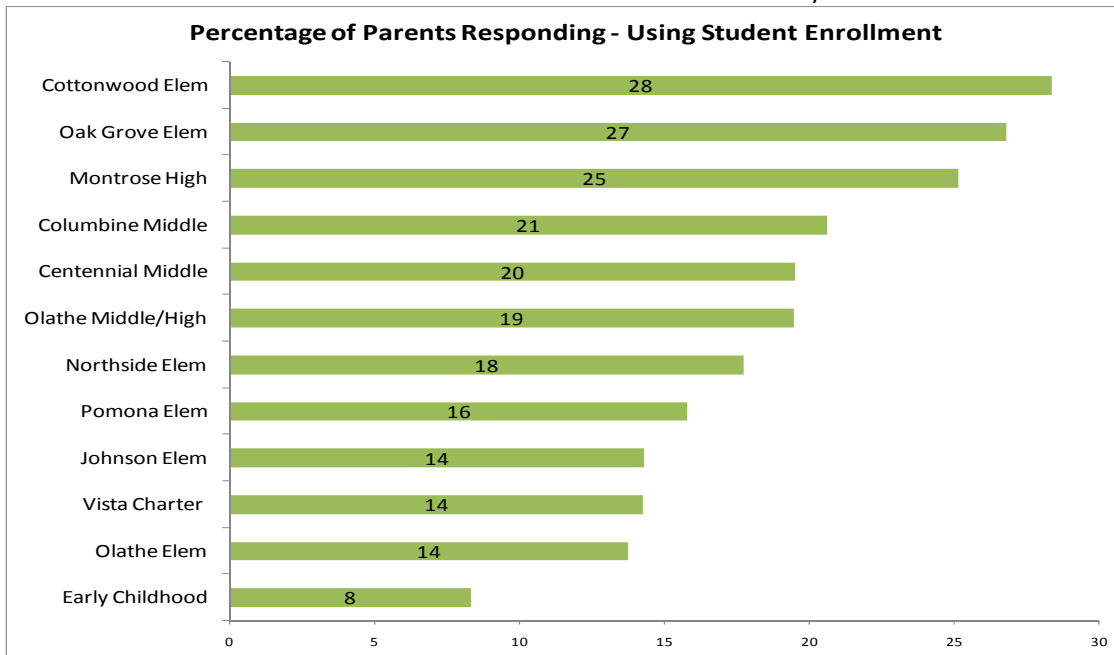
**Parent Responses**

The satisfaction surveys were provided electronically to parents who have provided us with an email address, and were mailed to parents without an email address in Infinite Campus. A total of 1,297 surveys were received, 1,036 electronically, and 261 were returned in the paper format. The year we heard back from 20% of our parents, which is one point higher than last year.

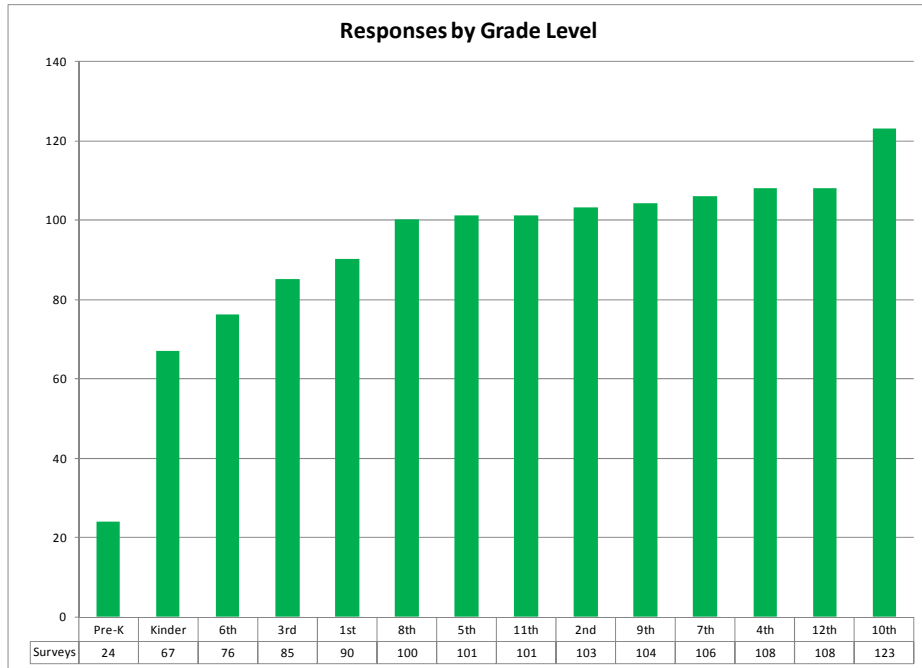


*We heard  
back from  
20% of  
our  
parents.*

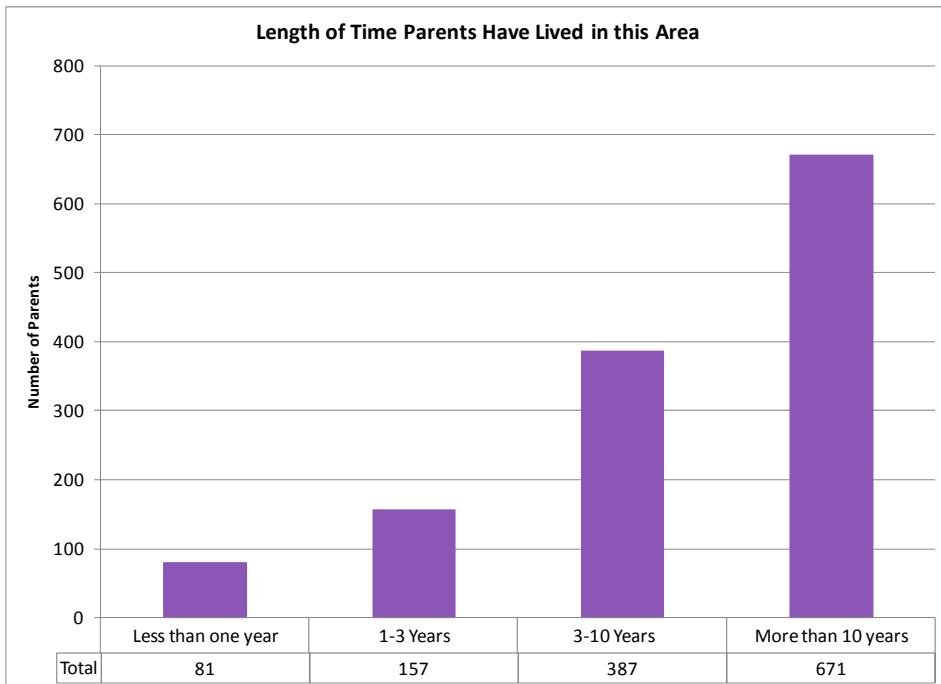
When comparing student enrollment and responses by parents, we heard most often from parents whose students attend Cottonwood Elementary.



This year, the highest number of responses came from parents who have students in the 10<sup>th</sup> grade.

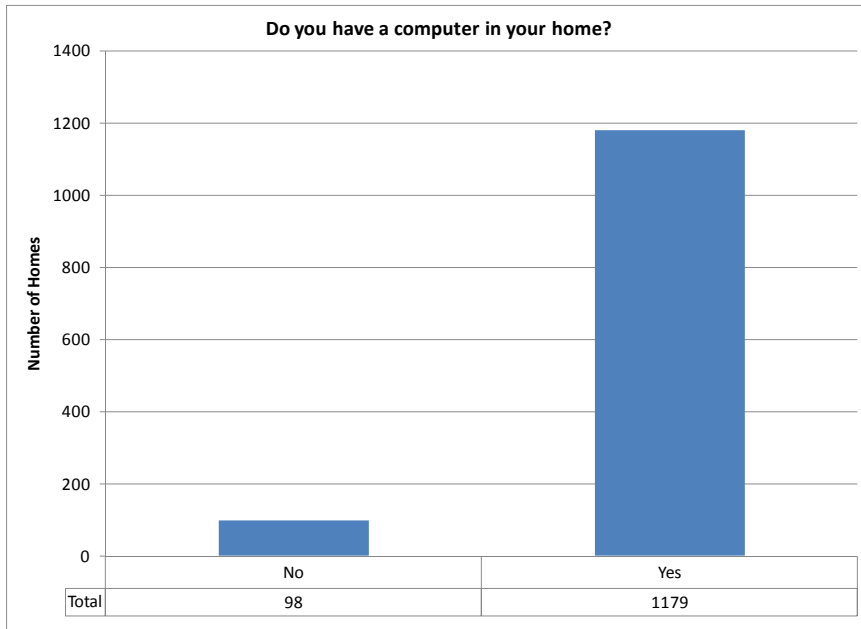


Historically, we hear most often from parents who have lived in the Montrose and Olathe the longest. This year, that trend continued. Nearly 52% of our parents responding have lived here longer than 10 years.



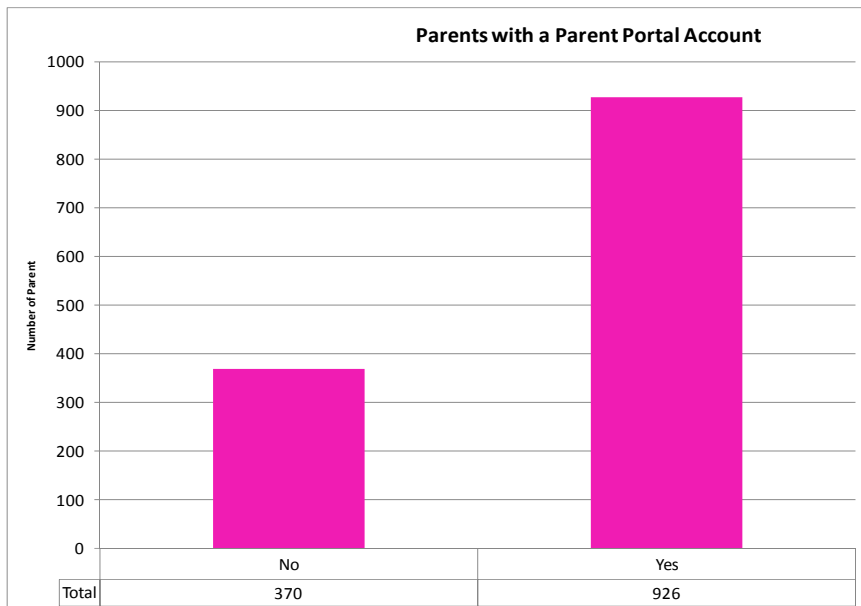
*Historically, we hear back most often from parents who have lived in our area the longest.*

Of our parent responding, 1179, or 90% indicate that they have a computer in their home. In 2001, 86% of our parents responding indicated they had a computer in their home. While the use of on-line access is increasing, we will continue to reach out to our parents who do not have Internet access at home or choose not to provide us with their email address.



*This year 90% of parents responding have a computer in their home. In 2001, 86% of parents responding indicated they had a computer in their home.*

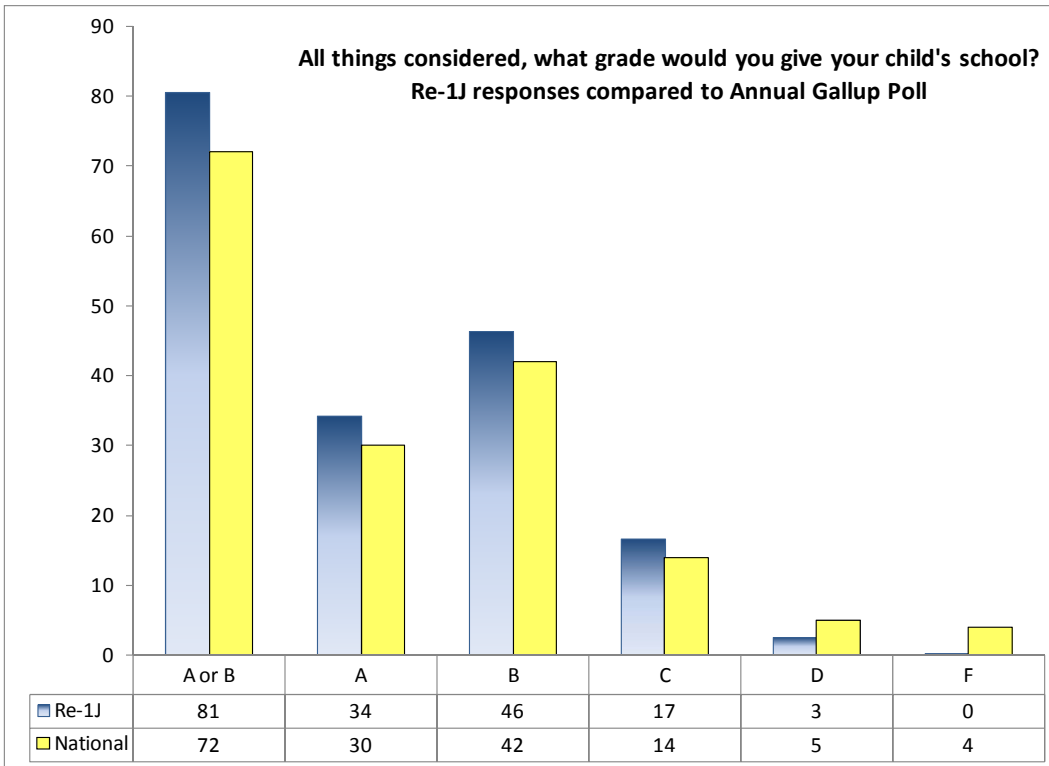
We also ask our parents if they have established a Parent Portal account. We will continue to encourage parents to register for this secure access to their student’s progress, attendance, assessment and health information.



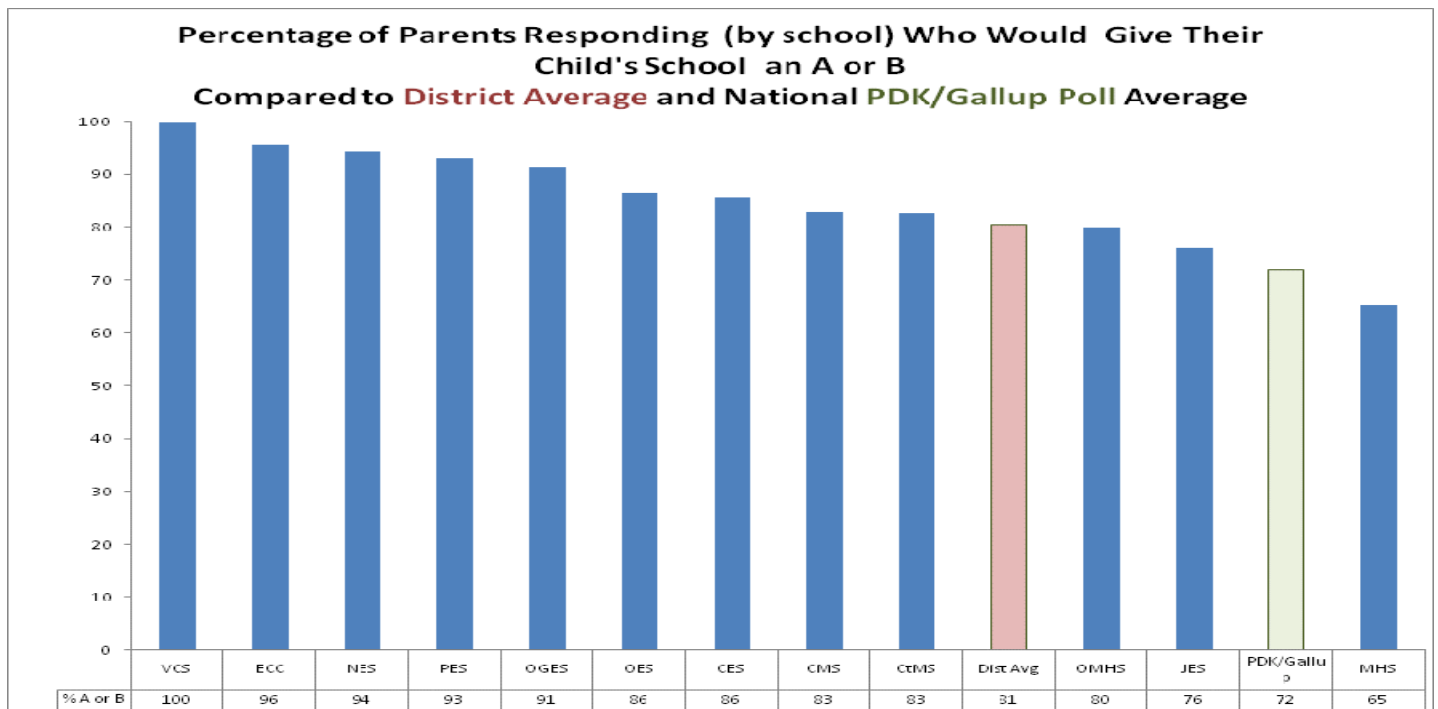
This year, we provided parents with an open text box to “provide any comments or suggestions on Parent Portal.” Here is a verbatim sampling of what parents are saying. Complete school-by-school comments will be provided to each principal.

- ❖ Very Helpful
- ❖ It would be great if you could navigate between classes instead of getting out of one class then clicking on another class.
- ❖ It rocks! Thank you so much for such a great system!
- ❖ IT IS VERY HELPFUL TO MONITOR PROGRESS OF STUDENTS.
- ❖ I use it and think it works well.
- ❖ Great tool. I love it.
- ❖ Excellent program for the parents to keep track of attendance, assignment etc. I check Parent Portal every day to keep track of my son's missing assignment which has helped me tremendously to keep him in tract. We actually check the website together, so that he is also able to view his progress and aware of it.

Each year we ask our parents to assign a letter grade to their child's school. Using the annual Phi Delta Kappa/Gallup Poll, we compare the results of public school parents across the country to public school parents in Montrose and Olathe. Our parents gave our schools an A or B 81% of the time.



*Montrose & Olathe public school parents gave our schools an A or B **81% of the time.** 72% of public school parents across the nation gave their schools an A or B.*



Parents were asked to respond to a series of statements about their child's school, principal, programs, and the school district in general by indicating their degree of agreement with each statement, based on a five-point Likert scale:

5 – Strongly Agree      4 – Agree      3 – Neutral      2 – Disagree      1 – Strongly Disagree

If a statement did not apply to their student, parents were instructed to leave the rating blank, or to use the N/A (not applicable) option. Any response left blank or marked N/A received a null point value and were not averaged.

	District Avg
My child's school can be described as a good place to learn.	4.17
My child's school expects the best from students.	4.11
My child's school is better today than it was five years ago.	3.79
My child's school is open to new ideas.	3.77
My child's school facilities are clean and well maintained.	4.13
The number of children in my child's classroom is appropriate.	3.71
My child's classroom has adequate supplies & materials.	3.76
My child is being taught reading & writing at a satisfactory level.	4.06
My child is being taught mathematics at a satisfactory level.	4.02
I believe full-day kindergarten is important.	3.73
I believe before and after school child care is important.	3.92
The elective/special classes offered at my school are adequate.	3.73
The extra-curricular activities offered at my school are adequate.	3.78
The CSAP is of value to me as I evaluate my student's academic progress.	3.24
MAPS (Level Tests) are of value to me as I evaluate my student's academic progress.	3.56
The hot lunch program in my school is adequate.	3.02
My child's teacher expects children to do well.	4.30
My child likes his/her teacher.	4.34
When I call my child's school, I receive a response to my question or concern.	4.30
The staff at my child's school exhibits positive staff morale.	4.22
My child's principal is visible and approachable.	4.00
My child's principal interacts well with students.	3.94
My child's principal handles discipline problems promptly and effectively.	3.86
My child's principal communicates effectively.	3.86
I am adequately informed about events at my child's school.	3.99
Parents in my child's school generally support my expectations for students.	3.91
My child's school is headed in the right direction.	3.98
The school district's gifted and talented program is headed in the right direction.	3.39
The school district's special education program is headed in the right direction.	3.61
The school district's English as a Second Language (ESL) program is headed in the right direction.	3.32
I receive adequate information on district-wide activities.	3.55
The school district's facilities are adequate for our students and community.	3.15
The school district is headed in the right direction.	3.44
The school board is headed in the right direction.	3.43

Here are the same responses, in descending order:

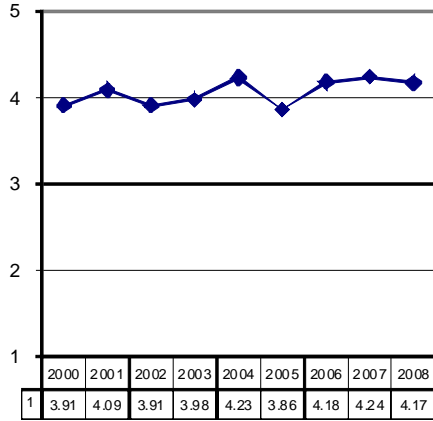
	District Avg
My child likes his/her teacher.	4.34
When I call my child's school, I receive a response to my question or concern.	4.30
My child's teacher expects children to do well.	4.30
The staff at my child's school exhibits positive staff morale.	4.22
My child's school can be described as a good place to learn.	4.17
My child's school facilities are clean and well maintained.	4.13
My child's school expects the best from students.	4.11
My child is being taught reading & writing at a satisfactory level.	4.06
My child is being taught mathematics at a satisfactory level.	4.02
My child's principal is visible and approachable.	4.00
I am adequately informed about events at my child's school.	3.99
My child's school is headed in the right direction.	3.98
My child's principal interacts well with students.	3.94
I believe before and after school child care is important.	3.92
Parents in my child's school generally support my expectations for students.	3.91
My child's principal handles discipline problems promptly and effectively.	3.86
My child's principal communicates effectively.	3.86
My child's school is better today than it was five years ago.	3.79
The extra-curricular activities offered at my school are adequate.	3.78
My child's school is open to new ideas.	3.77
My child's classroom has adequate supplies & materials.	3.76
I believe full-day kindergarten is important.	3.73
The elective/special classes offered at my school are adequate.	3.73
The number of children in my child's classroom is appropriate.	3.71
The school district's special education program is headed in the right direction.	3.61
MAPS (Level Tests) are of value to me as I evaluate my student's academic progress.	3.56
I receive adequate information on district-wide activities.	3.55
The school district is headed in the right direction.	3.44
The school board is headed in the right direction.	3.43
The school district's gifted and talented program is headed in the right direction.	3.39
The school district's English as a Second Language (ESL) program is headed in the right direction.	3.32
The CSAP is of value to me as I evaluate my student's academic progress.	3.24
The school district's facilities are adequate for our students and community.	3.15
The hot lunch program in my school is adequate.	3.02

Following these statements, parents were provided an opportunity to write, in their own words, responses to four opened ended questions: (Each school will be provided with the complete responses to these questions).

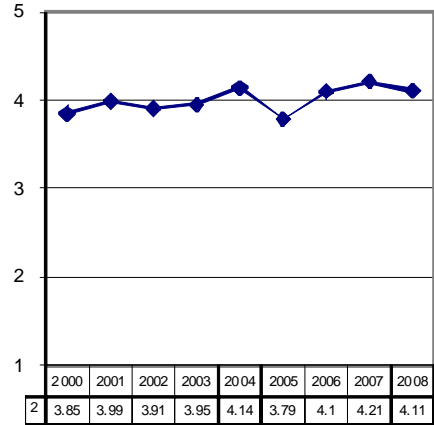
1. What is the best thing you hear about your school or the district?
2. In what way could your school or the district improve?
3. Please provide any other comments that might help us provide better service to you.
4. If you have a parent portal account, please provide any comments or suggestions on the Parent Portal.

## Parent Responses on School Climate

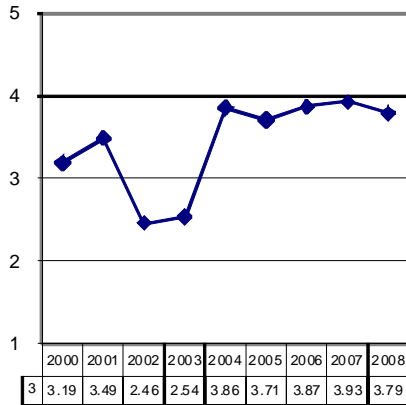
My child's school can be described as a good place to learn.



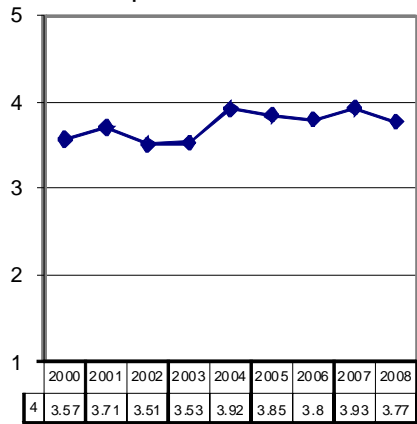
My child's school expects the best from students.



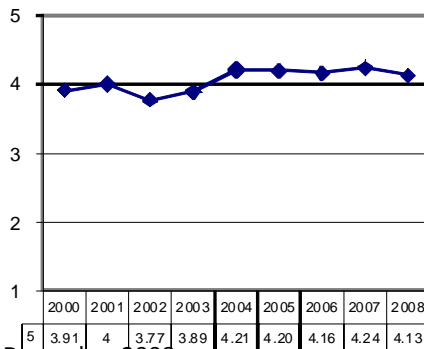
My child's school is better today than it was five years ago.



My child's school is open to new ideas.

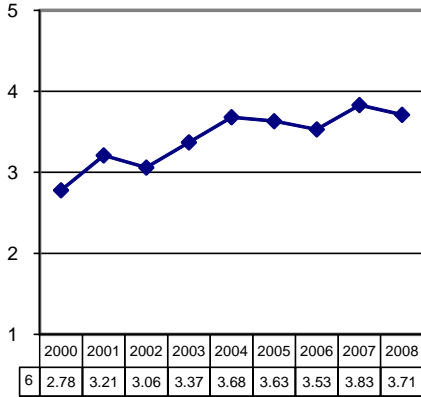


My child's school facilities are clean and well maintained.

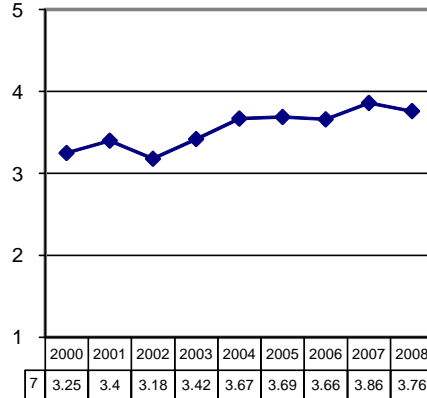


**Parent Responses on Classroom ~ Programs ~ Assessments,**

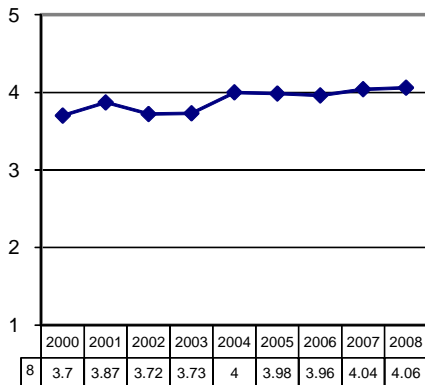
The number of children in my child's classroom is appropriate.



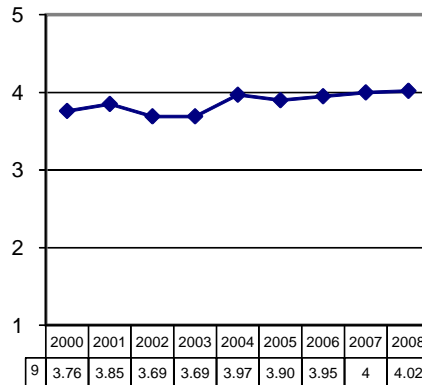
My child's classroom has adequate supplies & materials.



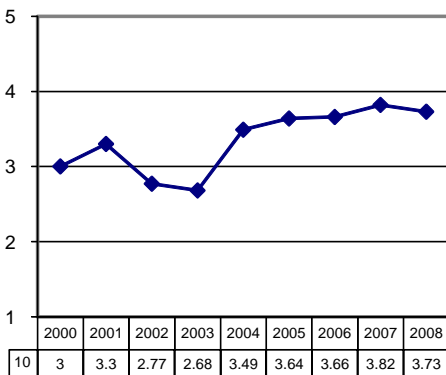
My child is being taught reading and writing at a satisfactory level.



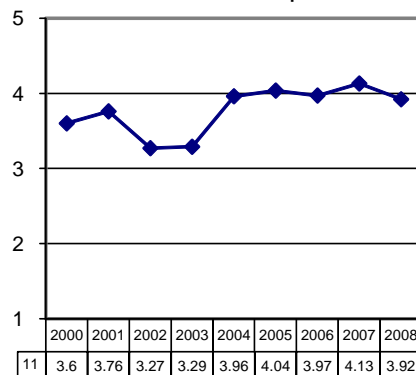
My child is being taught mathematics at a satisfactory level.



I believe full-day kindergarten is important.

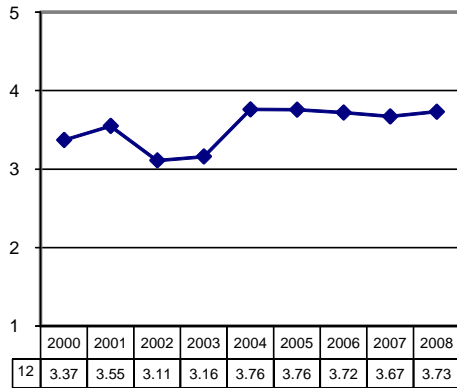


I believe before and after school child care is important.

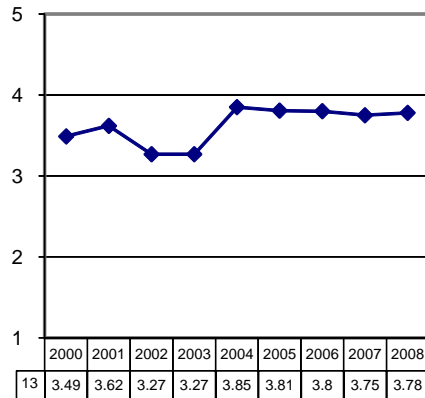


**Parent Responses on Classroom ~ Programs ~ Assessments**

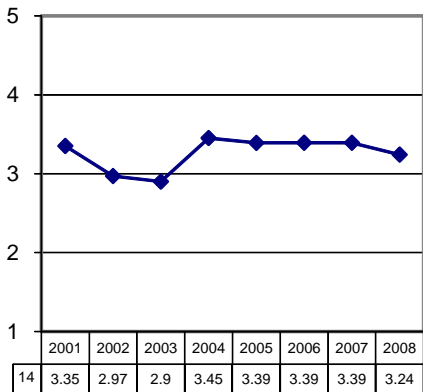
The elective/special classes offered at my school are adequate.



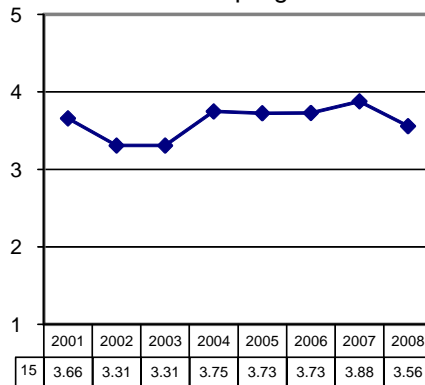
The extra-curricular activities offered at my school are adequate.



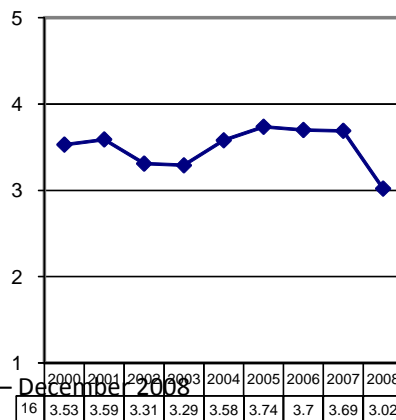
CSAP is of value and use to me as I evaluate my student's academic progress.



Level Tests are of value and use to me as I evaluate my student's academic progress.

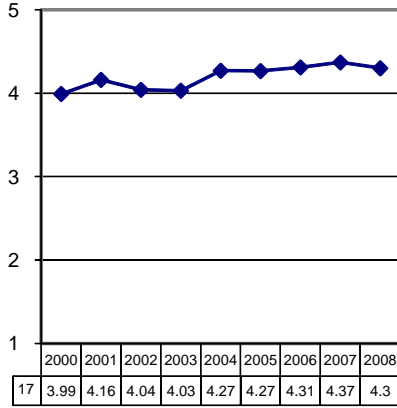


The hot lunch program in my school is adequate.

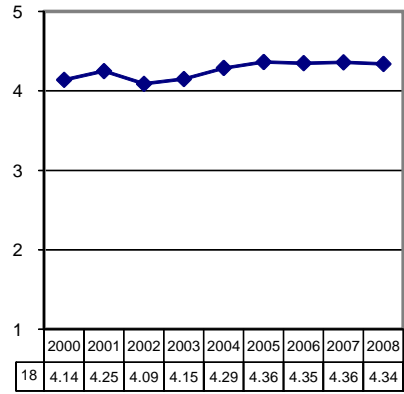


## Parent Responses on Teachers and Staff

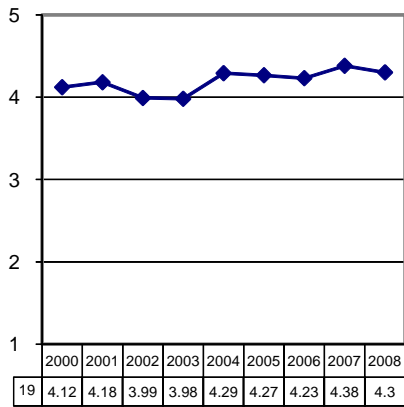
My child's teacher expects children to do well.



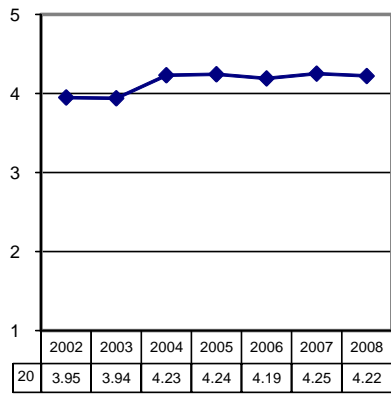
My child likes his/her teacher



When I call my child's school, I receive a response to my question or concern.

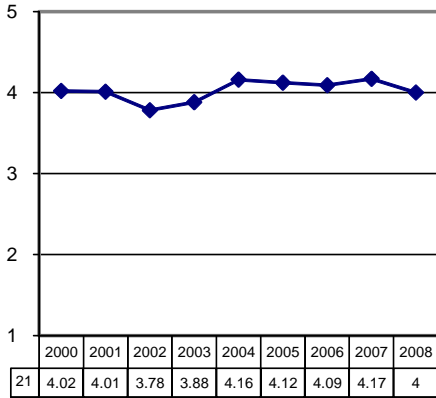


The staff at my child's school exhibits positive staff morale.

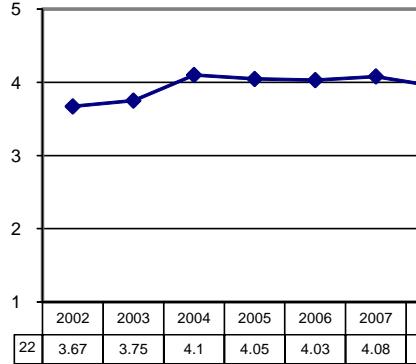


**Parent Responses on Principal ~ Communication ~ Parents**

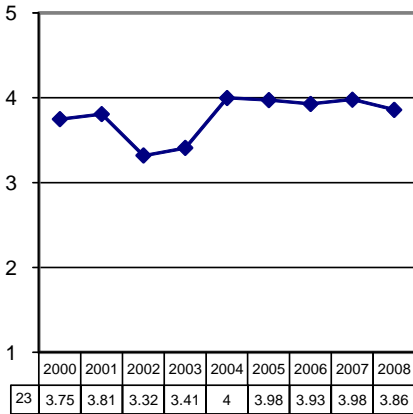
My child's principal is visible and approachable.



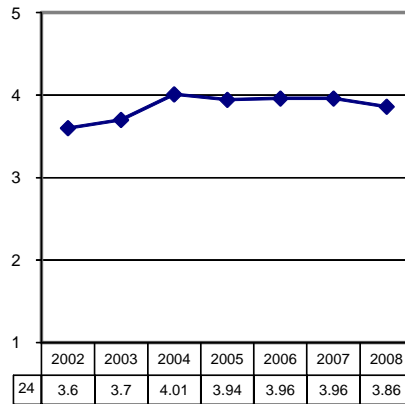
My child's principal interacts well with students.



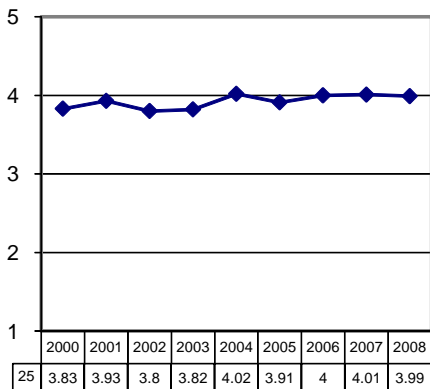
My child's principal handles discipline problems promptly and effectively.



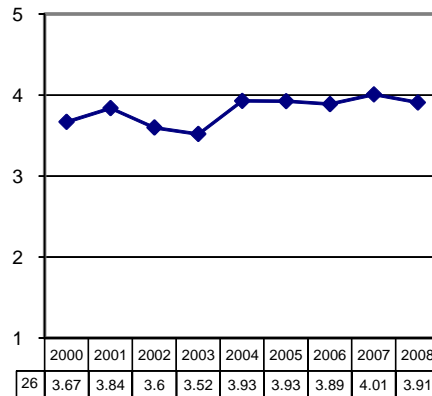
My child's principal communicates effectively.



I am adequately informed on events and information pertaining to school-wide information.

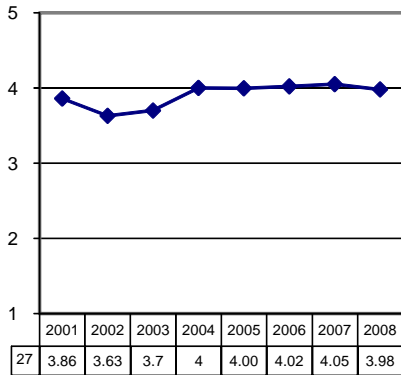


Parents in my school generally support the expectations teachers have for students.

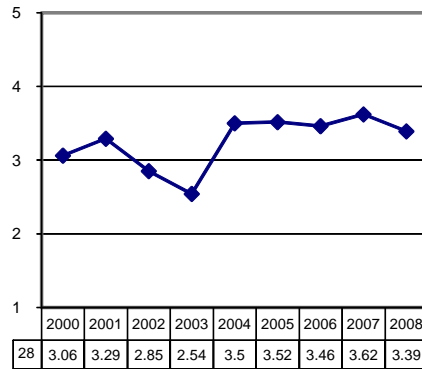


## Parent Responses on School ~ District Programs, Communication &

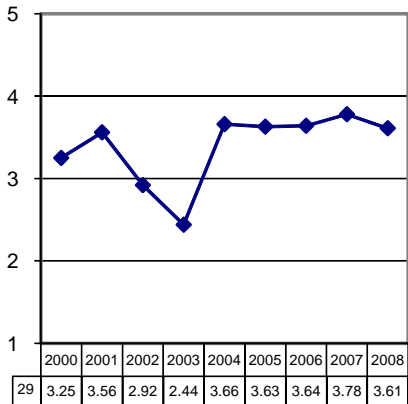
My child's school is headed in the right direction.



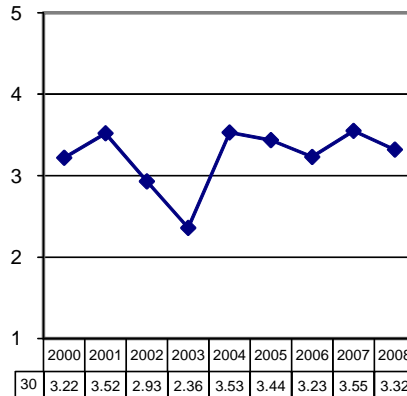
The school district's gifted & talented program is headed in the right direction.



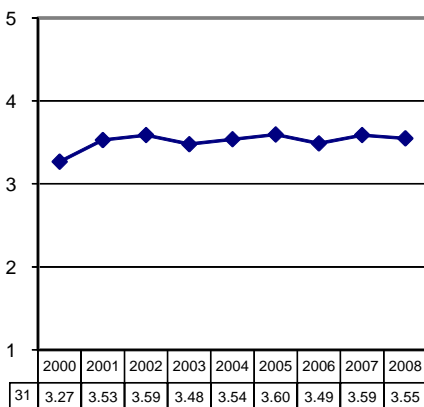
The school district's SPED program is headed in the right direction.



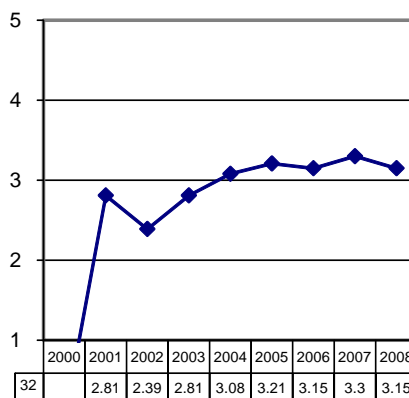
The school district's ESL program is headed in the right direction.



The school district provides adequate information on district-wide activities.

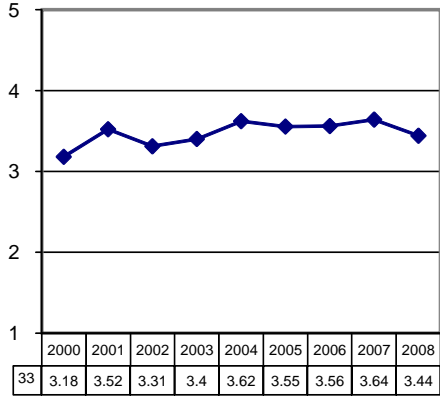


The school district's facilities are adequate for our students and community.



**Parent Responses on District ~ School Board**

The school district is headed in the right direction.



The school board is headed in the right direction.

