

# Olathe Elementary School

## Return To Learn for Pirate Families

2020-2021



Welcome to the 2020–2021 school year! We are excited to engage with your students and take on a new school year of learning, growing and collaboration. Our priority is keeping our students safe and healthy. This is even more important as we take on school in the midst of a pandemic. We are excited to begin a new school year and have missed our pirates so much!

### Return-to-Learn Plan

The Colorado Department of Education (CDE) and Colorado Department of Health and Environment (CDPHE) have developed [guidance](#) for opening schools based on three phases. The [MCSD Return-to-Learn Plan](#) is rooted in this guidance.



**STAY AT  
HOME**



**SAFER AT  
HOME**



**PROTECT OUR  
NEIGHBORS**

High COVID-19 Incidence in the community.	Moderate COVID-19 Incidence in the community.	Low COVID-19 Incidence in the community.
---	---	--

Olathe Elementary School's Return to Learn Plan follows the guidance and phases from MCSD, CDE and CDPHE.

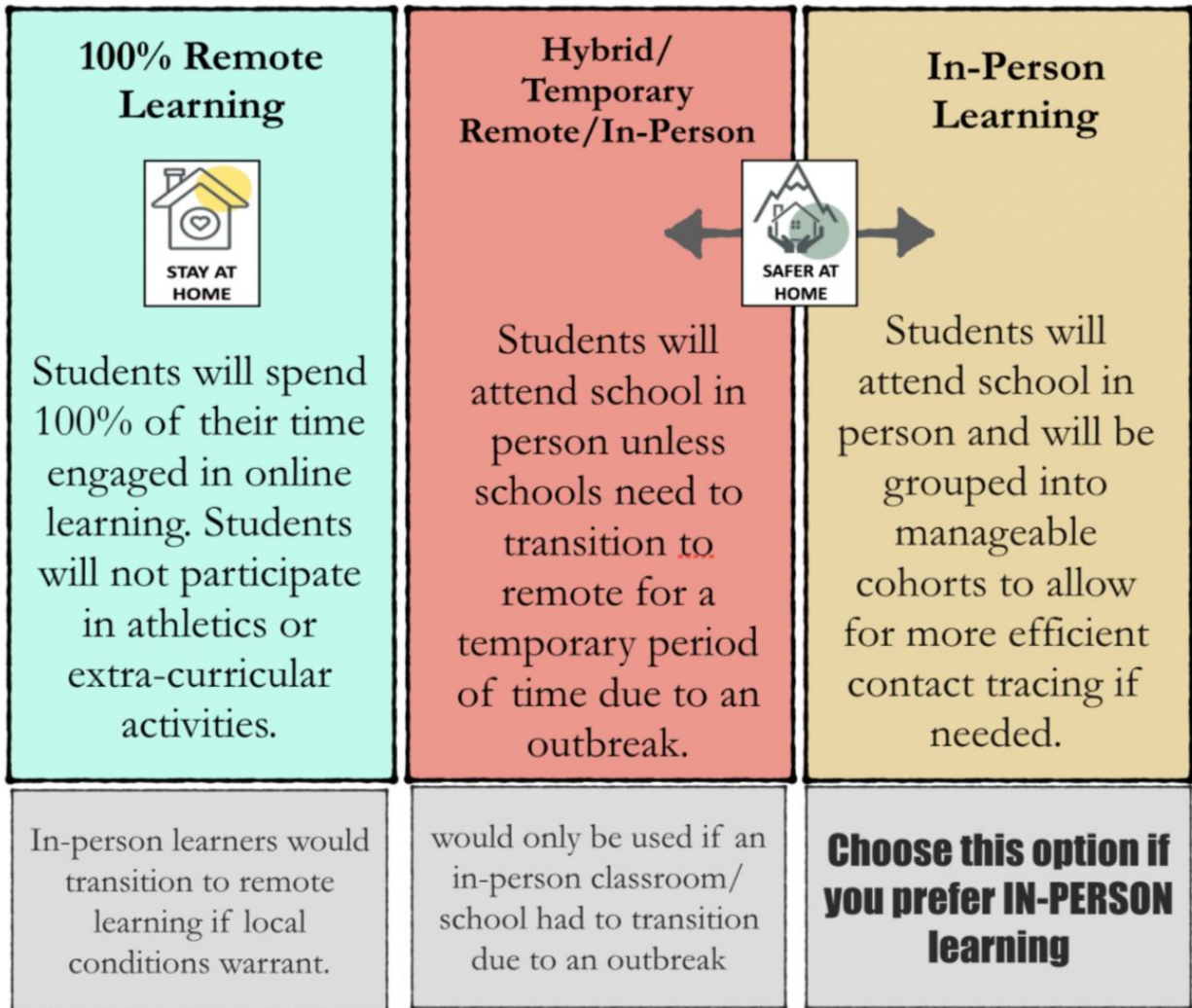
## OES In-Person Learning Plan

In-person learning plays a vital role in a child’s academic and social-emotional development.

We recognize that in-person learning may not be each family’s preference until there is a viable treatment solution or a vaccine to COVID-19. The purpose of the Return to Learn Plan (Plan En Espanol) is to provide MCS D students, families and staff with information about learning options (in-person and online). This document outlines the highlights of returning to school in August whether a person chooses in-person learning or online learning.

Students learn in-person, at school when we are in the Safer at Home phase or Protect Your Neighbor phase. The graphic below shows what an in-person learner may experience during the school year.

Students learn online (Remote Learning), at home when we are in the Stay at Home phase. Families choosing this option will be able to transition to online learning each quarter if they choose, if space is available



### **Grade Level Cohorts**

In order to align with best practices for social distancing, Olathe Elementary will minimize movement throughout the school. Students will be placed and kept in grade level cohorts and will spend their day with that group of students. We plan to provide access to specials (like music, art and physical education), lunch and recess time. The use of outdoor learning spaces and activities will take place as much as possible, so it will be important for families to send their child to school prepared for outdoor learning. Our goal is that once students are in their classroom, learning looks and feels as natural and normal as possible given the guidance from state and local public health departments. If students and staff in a quarantined cohort are well enough, they can participate in remote learning during their 10-14 day quarantine period.

### **Morning Routine (Drop Off, Breakfast, Health Screening, Soft Start)**

OES drop off and morning routine will begin at 7:45 AM. Gates will be opened no later than 7:45 AM for students to enter the campus. Grade levels will enter the building to be screened at their designated screening station. Screeners and students will follow the MCSD screening protocol.

After passing the screening students will go to their classroom to start the school day and have breakfast in the classroom. Olathe Elementary will be doing a “soft” start, meaning students can go straight to their classrooms as they arrive. Once in their classrooms, students will experience a typical start to the school day. When entering the room they can follow their class’s regular morning routine.

Kindergarten families will receive detailed routine information prior to September 1st.

#### Screening Areas:

Kinder - 1st Grade Hall Doors

1 - 1st Grade Hall Doors

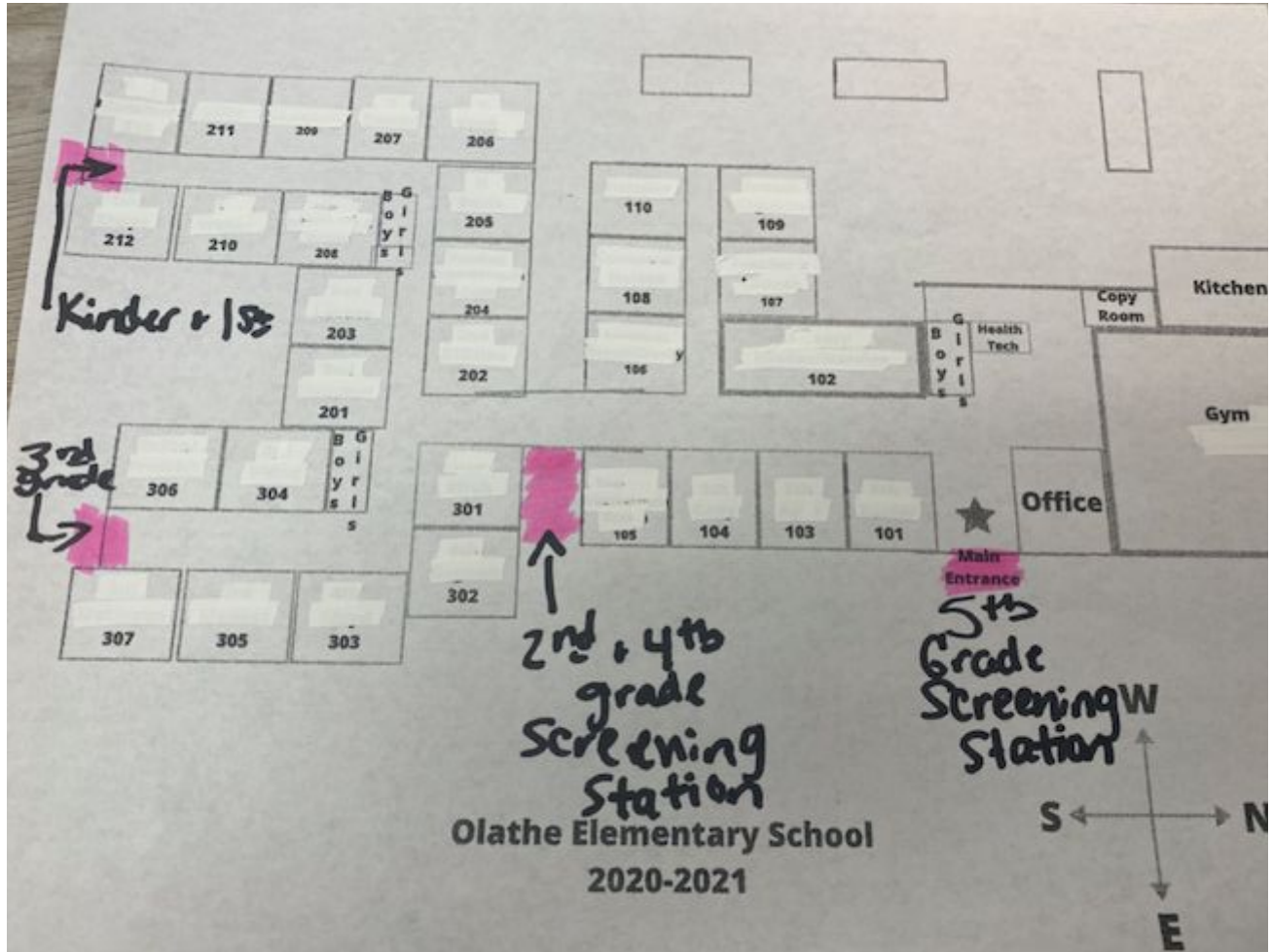
2 - Breezeway entrance

3 - 3rd Grade Hall Doors

4 - Breezeway Doors

5 - Front Doors

See map below:



### Lunch Routine

Grade level cohorts will go to the cafeteria for lunch every day. Students will follow our normal lunch procedure for the cafeteria and will sit at one of the tables assigned to their cohorts. To meet social distancing guidelines, there will be a maximum of 9 students sitting at a tables. Green “please sit here” stickers will be on the benches illustrating where students can sit. Cafeteria expectations will be the same as they have been in the past: a safe, calm and positive atmosphere where all students can enjoy their lunch.

Each cohort of students will have a scheduled 20 minute lunch. After 20 minutes, K-2nd grade students will be excused to go to recess and 3rd-5th grade students will line up to go back to class (they will have recess before lunch). There is a scheduled 5 minute break between cohorts for tables and benches to be wiped down and disinfected. Outside spaces will also be utilized for lunch weather and supervision permitting.

### Dismissal

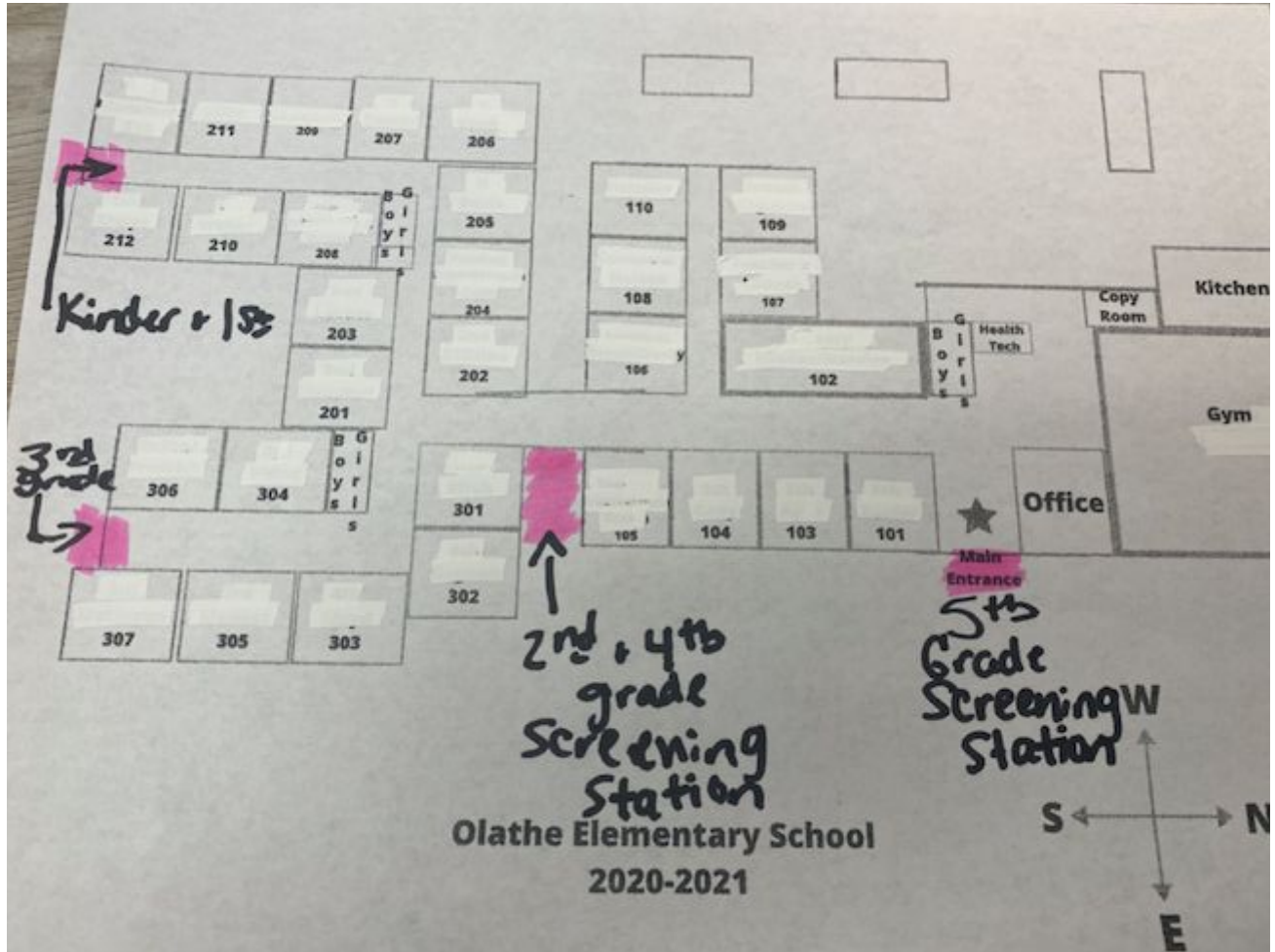
Dismissal will take place in an orderly manner at 3:08 daily. Teachers will excuse students to go to their assigned area in the following order:

**Students will exit the school at their Screening Station.**

3:08pm- Bus Riders and Car Riders will be dismissed

3:15pm-Walkers will be dismissed

See Map below for dismissal exits.



### Mitigation

**Handwashing** - Regular hand washing and sanitizing will take place every hour for students and staff. At minimum, students will wash their hands with soap and water first thing in the morning (after breakfast), prior to lunch, and immediately following lunch/recess. During other hours in the day, students can use hand sanitizer or soap and water to wash their hands.

**Drinking Fountains** - Students are encouraged to bring water bottles to school as bottle filling stations will be accessible for all students. Drinking fountains will not be accessible and turned on for student/staff use.

**Masks** - During the school day, students in kindergarten through 4th grade are encouraged to wear masks during in-person instruction or group activities where social distancing is improbable. 5th grade students are required to wear masks throughout the school day when moving about the building and participating in in-person instruction that requires them to violate the social distancing requirements.

Students in 5th grade are required to wear masks throughout the school day when moving about the building and participating in in-person instruction that requires them to violate social distancing requirements.

#### Special Considerations / Exceptions

**Mask Breaks:** Classes will establish scheduled “mask breaks” throughout the day. These breaks will take place in settings where students can maintain appropriate social distancing of 6 feet.

**Meal Times:** Students will not have to wear masks during meal and snack times and schools will encourage social distancing during these times.

**PE and Recess:** MCSD recognizes that during periods of moderate-to-vigorous physical activity students will need to remove their masks. Those activities will take place outdoors whenever possible. Students will not be required to wear masks during recess times outside.

**Group activities, seminars, discussions, other similar activities:** OES will encourage teachers to utilize outdoor spaces and larger communal areas that allow for social distancing exceeding 6’ when instruction requires masks not be worn, but will never require a student to lower their mask, even if the above conditions are met.

**Staff:** Staff are required to wear a cloth face covering at all times while on duty and will have a mask accessible at all times, even in their classrooms, offices, etc.

When working in a space without other staff members, it is not expected that staff wear a mask. However, when another individual joins the workspace (i.e. visits a staff member’s desk, classroom, or office) both staff members are expected to don their mask if social distancing is not possible.

**Health Screening** - The Universal Screening Plan includes a temperature check at home, and a daily on-site screening procedure that will take about 15 seconds per student. Students and staff will be screened prior to entering school each day. This will include a touchless thermometer and a series of symptom questions. Anyone with a fever, defined as a temperature of 100.4 or greater, will be screened again within 3-5 minutes to allow for confirmation of a correct temperature. If the temperature remains high, PES has procedures in place to safely and comfortably quarantine students until parents/guardians can return to school to pick them up.

The second layer of these procedures is to self-quarantine as a staff member or student. Symptomatic staff members or students will be quarantined for 10 days following the onset of symptoms and 72 hours following the resolution of fever OR a negative result from a COVID PCR test.

The final layer includes contact tracing as a measure to ensure that Public Health (PH) can work in concert with MCSD in determining who else may be at risk of contracting COVID-19.

**Social Distancing** - Students will practice social distancing in buildings as much as possible. There will be times when appropriate social distancing cannot be attained. In cases such as these, staff and students will be trained in appropriate behavior and practices. In communal areas like the cafeteria, students will be asked to practice social distancing by maintaining at least 3 feet social distance between themselves (goal will be 6 feet if space allows for it). OES will encourage teachers to be creative in setting up their classrooms to leverage the social distancing standards to support instruction. Our intention is that learning environments are still creative, fun, and safe spaces for our students while working to maintain a minimum of 3 feet for social distancing.

### **Recess**

Grade level cohorts will have recess in assigned areas to ensure cohorts are separated. OES students to ensure a safe playing environment and to encourage students to avoid physical contact while playing.

### **Classroom Environment**

Our goal at OES is to create as typical of a classroom experience as possible. All classrooms will be organized and set up similar to how they were last year while allowing for a minimum of 3 feet for social distancing. Students will have their own spaces in their classrooms, utilize their own materials (there will not be community materials at tables), and have the ability to move throughout the classroom.

All classrooms will have "Covid Cleaning Packs" that staff will be trained to use by building custodial staff. All classrooms, entries and communal spaces will have hand sanitizer readily available.

### **Academics and Blended Model**

Olathe Elementary staff have received training and support in implementing a blended learning model. A blended learning model utilizes technology to efficiently and effectively provide differentiated instruction geared to meet student's needs and skills. A blended learning model will also allow for a smooth transition into remote online learning if necessary.

Every grade level K-5 will have a website that will house a weekly calendar with connected digital content for the week's lessons. Students and families can easily access the site for student learning in-person or in a remote learning situation. All content will be connected to



our adopted curriculum and instructional scope and sequence. The English Language Arts curriculum is Core Knowledge Language Arts (CKLA) which will also be supplemented with the online CKLA Amplify Learning Hub. Bridges will continue to serve as our math curriculum and will be supplemented with Kahn Academy digital resources.

All classes K-5 have iPads for every student and will utilize Google Classroom to manage student collaboration, digital content and for students to submit work digitally. Starting August 27th, all students will begin learning procedures and protocols to effectively and efficiently utilize their iPad, Google Classroom and their grade level website for learning, collaboration and submitting assignments.

### **Specials**

In an effort to meet cohort recommendations, grade level cohorts will have the same specials class for 5 days straight (one week at a time). Specials teachers will work with 2 cohorts per week. One cohort during the AM periods and a second cohort during the PM periods.

Art, music, library and computer/collaboration lab will take place in those classrooms. When weather permits, PE will take place outside in the main center field. During inclement weather, PE will take place in the gym (if not interrupted by the extended lunch schedule).

Used tables and surfaces will be disinfected in between cohort groups (usually during the lunch break).

### **ESS (Special Education) and Intervention Support (WIN Time)**

Special Education teachers and Intervention teachers will work in teams to support our students with IEP's and SRD plans. One teacher will be working with each grade level and providing services for students with IEP's and SRD plans. All students with IEP's will be given instruction based on their IEP goals and be under the direction of a certified special education teacher. Our students with SRD plans will be given instruction based on their SRD goals under the direction of our Reading Interventionist. All IEP service minutes will be met.

G/T - GATE programming will be available to students in a 100% digital/virtual environment in order to provide the greatest flexibility. Students will be able to access their GATE content in their general education classroom (most likely during WIN time). GATE facilitators will use Google Classroom and Google Sites to provide instruction to students.

CLD - Our students with CLD plans will receive support from the CLD teacher as determined by their language need and need for support. The goal is for the CLD teacher to work alongside the classroom teacher in a co-planning and co-teaching model as cohorting guidelines allow. CLD teachers will work directly with "newcomer" language level students in small groups.

### **Remote/Online Learning Plan**

If a grade level has to quarantine or if the school/district is closed due to an outbreak, OES will shift to our online remote learning plan. That plan can be accessed and reviewed here:

[https://docs.google.com/document/d/1pB4INAqeMmwkdOoR86FHihOFiOTbygiouLuN\\_g8RDA/edit?usp=sharing](https://docs.google.com/document/d/1pB4INAqeMmwkdOoR86FHihOFiOTbygiouLuN_g8RDA/edit?usp=sharing)

### **Parent and Volunteers in the Building**

At OES we are proud and thankful of the community of volunteers that support our students. While Montrose County is at the Safer at Home we ask that all volunteering support take place off campus (i.e. prepping materials). Parents and other community visitors to the campus can access the front office, but will not be allowed past that point. If the county status is raised to Protect Our Neighbors, we will reconsider this policy.

Parents and other community members can schedule a time to meet with a staff member or administrator. All scheduled visitors will be required to go through the health screening and to wear a mask. This includes parent group and PAC meetings. These meetings will take place in the office or a room separate from students, or will take place after school is over. There is also the option to schedule an online meeting.

### **Kindergarten Assessment Day Scheduling and Plan**

Half of the kindergarten students will come to school on Thursday, August 27th and the other half on Friday, August 28th for assessments and to learn about our school. The start time for these days will be 9 AM and the activities will conclude at 2 PM. Families can drop off and pick up their students in front of the main entrance of the school.

Kindergarten teachers and our office staff will be calling families the week of August 17th to schedule these two days.

Monday, August 31st, Kindergarten teachers will go through the data and determine classes. They will then contact families about their child's class assignment.

Kindergarten students will officially start school on September 1st.

### **Communication**

Parents and family can expect consistent and concise communication. Major announcements will be posted on the OES website <https://oes.mcsd.org/> and our Facebook Page.

Classroom and grade level communication will take place through the Talking Points messaging app. If families cannot access Talking Points, office staff will contact family to establish the best mode of communication.

**Transportation:**

MCSD in collaboration with Student Transportation of America (STA) will provide our students transportation to and from school on buses in accordance with CDE and CDPHE guidelines following the social distancing and ventilation protocols outlined in both.

Guidelines:

- STA protocols will be followed in accordance with the STA Exposure Control and Response Plan on all MCSD Buses
- Expectations on buses: students, staff, and drivers will wear PPE at all times, will load back to front, will socially distance by occupying every other seat, unless they are siblings (as long as it is practical for capacity limitations), and windows will be cracked to increase ventilation.

**Questions/Concerns**

Please call the office at: 970-252-7940